

Art Objects From Steel

By O. D. Smith

A Member of The Star's Staff.

Structurally speaking the steel erected in the yard of an Overland Park residence gives the viewer an abstract sense of art.

In fact, the steel objects are art, as Arlie J. Regier, the artist and homeowner at 8741 Newton Drive, will tell you.

Regier, 41, is a metal shop instructor at Nallwood Junior High School, 9700 Woodson, Overland Park. Recently his ninth grade students, working in experimental metal sculpture, presented the city of Overland Park with a sculpture, which has been installed on a traffic median at 95th and Metcalf.

"We designed that sculpture

Johnson County

in such a way that it would not become a traffic hazard," Regier said. "It is 60 feet long, four feet wide and only six inches high."

Regier has a degree in metal engineering from Colorado State University at Fort Collins. He has been working with metal sculpture about seven years as a hobby.

"It is a hobby with me," he said, "but I'm not against selling or exhibiting my work. I use the money to buy more materials."

Regier is working on an experiment for the Johnson County Parks and Recreation Department. He has designed tall, hollow, abstract cylinders which when installed will rotate. They are called individual shelter seats and are designed to hold only one person.

Wood and carpeting will be used to finish the interior of the shelter. Regier plans to group them like cattails for effect somewhere in the Shawnee Mission Park at 79th and Renner Road.

His workshop is the attached garage of the home. The interior takes on the appearance of a metal sculpture itself. The neat stacks, piles and arrangements of sizes, lengths and shapes of steel stock forms abstract designs.

When Regier finishes welding a metal sculpture he completes it one of three ways. He either paints it bright colors, gives it a coating of gun blueing for a natural steel effect, or sandblasts it and then allows it to oxidize naturally.

"In our shop at school," he

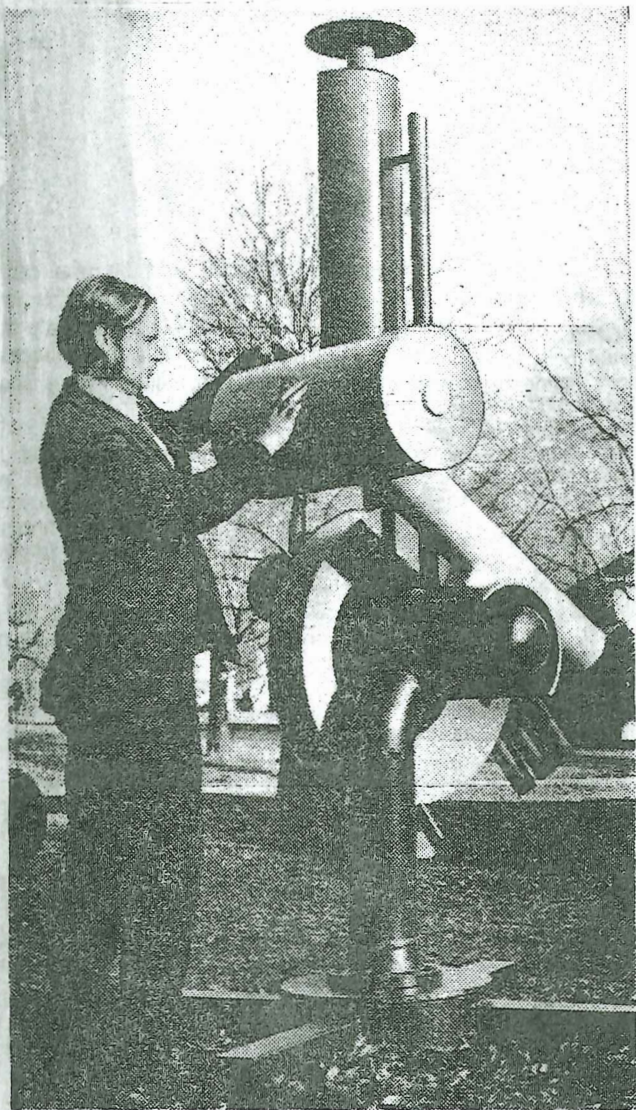
said, "we try to be objective and creative. We use abstract metal structures as a mode for teaching the basic fundamentals of design and welding.

"If it has been done before, we don't do it. If it is new, then we accept it, study it, let our minds wander a little and watch it develop into an individual piece of work," the instructor said.

As an example, while being

interviewed in his garage, Regier began selecting, haphazardly, short pieces of steel. He set up a square length of steel, placed a larger square beside it, set in a couple pieces of tubing and an angle iron and stood back to admire his creation.

"There," he said, "if I had a large piece of glass to place over the top I would have an abstract, structural steel coffee-table." To Reiger, the artist, it was that simple.



Arlie J. Regier, 8741 Newton Drive, Overland Park, metal shop instructor by profession and metal sculptor as a hobbyist, examines one of three pieces of his works of art which he has erected on the lawn of his home.

**Project
At Home**