

Interpretive School Programs 2008

History And Nature Awareness

*"Through interpretation, comes appreciation,
through appreciation, comes understanding,
through understanding, comes protection."*

Freeman Tilden



JOHNSON COUNTY
PARK & RECREATION
DISTRICT

www.JCPRD.com

www.erniemiller.com

Grade School Interpretive Programs

Johnson County interpretive programs provide environmental and historical awareness and "hands-on" educational experiences for students from pre-school through sixth grade. Our rangers and naturalists have experience and educational backgrounds in the areas of natural resource management, fisheries and wildlife, biology, anthropology, outdoor recreation and education. Each of our program offerings is designed for the specified grade level and provides an entertaining, participatory educational experience for students. For more information and scheduling, please call (913) 764-7759.



GRADE Kindergarten

ANIMAL CLUES

Who's Been Here?

Park naturalists or rangers will introduce your students to the clues left by wildlife. Learn how to identify tracks, scat, and other animal signs and figure out what the animals were doing. Learn how to "walk like the animals." Students will also touch many different animal furs and meet a special live animal guest.

Location: Your School

Fee: \$51 / \$56 first program
\$37 / \$41 consecutive programs

Maximum: 35 students

Time: 45 minutes

[January and February]

KIDS & CRITTERS

Take a hands-on exploration through the world of wildlife. Introduce your kindergarteners to a live native bird, reptile, and mammal. Where do they live and how do they survive? Discover their secrets and a whole lot more.

Location: Kansas Schools

Fee: \$43 / \$47 first program
\$28 / \$31 consecutive programs

Maximum: 25 students

Time: 30 minutes

[September through March]

Also see
**MYSTERIES,
WONDERS & MYTHS
OF NATURE**

under 1st - 3rd grade section.

This program is available
for kindergarteners.



FEE STRUCTURE

10% Discount Now Offered
for Johnson County residents!

1st Price - County Residents 2nd Price - Non-Residents

GRADE 1st - 3rd

THE TEPEE

Erect a tepee in your own schoolyard while learning first-hand the history, design and construction of this incredible dwelling.

Location: Your School

Fee: \$83 / \$91 first program
\$55 / \$60 consecutive programs

Maximum: 35 students

Time: 2 hours

[March, October and November]

MYSTERIES, WONDERS & MYTHS OF NATURE

Guided by park rangers and naturalists, students will explore some of nature's most exciting mysteries: weather, snakes and sounds of the night. They will come to understand things once thought frightening, and then use their newly found knowledge to help characters they meet in the woods.

Grades: K - 2nd

Location: Ernie Miller Park

Fee: \$5.25 / \$5.75 per student

Minimum: 50 students
or \$262 / \$287

Time: 9:00 am - 11:30 am

[April and May]



"The children were very active participants... I heard wonderful comments and many new discoveries from the kids!"

2nd Grade Teacher,
Hope Lutheran School

WILDLIFE WEBS

Untangle the web of Kansas wildlife as your students construct examples of food chains from the forest, pond, and prairie. These food chains will come alive as your students meet and learn about a member of each food chain.

Location: Kansas Schools

Fee: \$51 / \$56 first program
\$37 / \$41 consecutive programs

Maximum: 25 students

Time: 45 minutes

[September through March]



A PILGRIM FROM PLYMOUTH

History will come alive for your grade school students when they are visited by a Pilgrim from Plymouth. Step back into the 17th Century and experience the Pilgrims' perilous journey to America.

Location: Your School

Fee: \$51 / \$56 first program
\$37 / \$41 consecutive programs

Maximum: 35 students

Time: 45 minutes [November]

"Our Pilgrim was fabulous! The character places herself in 1623 and appears so real to the students. It went right along with our study of Pilgrims and Thanksgiving."

2nd Grade Teacher,
Prairie School

PROGRAM FEES ARE SUBJECT TO CHANGE WITHOUT NOTICE

GRADE

1st - 3rd

Also see;

***ANIMAL CLUES** under
Kindergarten section.
Program available for
1st -3rd grade.

***ECOLOGY ENCOUNTERS**
under *4th-6th grade section.*
Program available
for *3rd grade.*

TWOFALLINGVOICES

Life with the Seneca tribe

This program will highlight Eastern Woodland Indian culture. Discover how these Native Americans structured their society by patterns in nature and living in harmony with the land. Details on food, clothing and shelter will be shared. Hands-on artifacts will give students a glimpse into the past.

Hear stories from long ago, as the students meet Two Falling Voices, an English woman who lived seventy years with the Seneca people.

"WOW! These history programs bring history to LIFE! Two Falling Voices is wonderful. We'll be yearly customers from now on!"

1st Grade Teacher,
Tomahawk Elementary School

Location: Your School

Fee: \$51 / \$56

first program

\$37 / \$41

consecutive programs

Maximum:

35 students

Time: 45 minutes

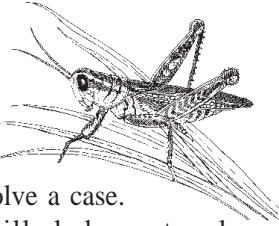
[November

through March]



INSPECTOR INSECTOR

The Inspector, that mysterious agent from the Insect Division, is hot on the



trail, trying to solve a case.

Your class will help untangle the inspector's clues and in the process learn about some insects' homes, what insects eat and their life cycle. This program makes a fun introduction or a rewarding conclusion to your unit on insects.



Location: Your School

Fee: \$51 / \$56 first program

\$37 / \$41 consecutive programs

Maximum: 35 students

Time: 45 minutes

[December - March]



PRAIRIE TRAVELER

Step back into the year 1870 as "Mattie Johnson" shares the story of her life as a child on the Kansas prairie. Tales of wagon trains, Indians, buffalo stampedes, sod houses, and frontier education recreate the pioneer experience.

Location: Your School

Fee: \$51 / \$56 first program

\$37 / \$41 consecutive programs

Maximum: 35 students

Time: 45 minutes

[January and February]

"We love this program, it is perfect for our grade level. The class was totally enthralled"

3rd Grade Teacher,
Overland Trail Elementary



BIRDS OF PREY

By day or night, out of the sky flies a rodent's nightmare, the birds of prey. Using their powerful talons, beaks, and wings, they are some of nature's best hunters. Your students will see close-up live examples of these majestic raptors and their special adaptations.

Location: Kansas Schools
Fee: \$51 / \$56 first program
\$37 / \$41 consecutive programs
Maximum: 35 students
Time: 45 minutes
[September-March]



KANSAS SYMBOLS

What do the American bison, tiger salamander, and sunflower have in common? They are just a few of the natural symbols of the great State of Kansas. Learn about these and others through an interactive program with hands-on items and live animals. This is just the program to help your group celebrate Kansas statehood (Jan. 29)!

Location: Kansas Schools
Fee: \$51 / \$56 first program
\$37 / \$41 consecutive programs
Maximum: 35 students
Time: 45 minutes
[January-February]



GRADE 4th - 6th

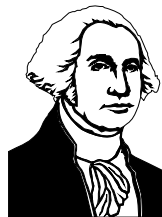
LAMP OF FREEDOM

Freedom! -- It was the dream of living free that compelled slaves to travel north. Step back in time as "Georgette Tucker" shares her story of the Underground Railroad, a labyrinth of safe houses, ingenious hiding places, acts of bravery and suffering.



Location: Your School
Fee: \$56 / \$61 first program
\$40 / \$44 consecutive programs
Maximum: 35 students
Time: 1 hour [February]

WINTER AT VALLEY FORGE



Winter 1777... Commander George Washington and his troops are stationed at Valley Forge, surviving the bitter cold and harsh conditions in the fight for

America's future and the freedom of every citizen. Listen as the struggle for independence is told through the voices of ordinary people doing extraordinary things in establishing a new country. These first person accounts detail the strength of the human spirit to persevere through hardships and achieve greatness. Stories of Nathan Hale, Paul Revere and other American heroes will be highlighted.

Location: Your School
Fee: \$51 / \$56 first program
\$37 / \$41 consecutive programs
Maximum: 35 students
Time: 45 minutes [December-January]

For information on our Snakes Alive or Wildlife Who's Who Programs call (913) 764-7759.

GRADE 4th - 6th

HERITAGE HISTORY LAB

Early morning at Ernie Miller Park finds your students "back in time". During the 1700's they will meet a French fur trapper, who describes his life on the waterways and on the prairies. They will also meet an Osage Indian who tells of the ways of his people. During the 1800's they will meet a newly arrived pioneer, who relays the hardships of living on the plains. These living history presentations will be followed in the afternoon by "hands-on" participation in pioneer games, erecting a tepee, and activities that will better acquaint students with the prairie ecosystem.

Location: Ernie Miller Park
Fee: \$6.25 / \$6.75 per student
Minimum: 80 students or \$500 / \$540
Time: 9:00 am - 2:00 pm
[September, October and November]

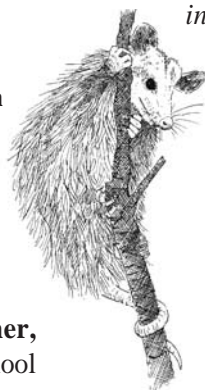
1990 National Association of Interpretation Region VI Outstanding Interpretive Program

1991 National Recreation and Park Association Midwest Region Class I Arts and Humanities Award

2002 National Association of Interpretation Region VI Outstanding Interpretive Program

"Really brings history alive -- I refer back to these characters all year in school."

5th Grade Teacher,
Crestview Elementary School



ECOLOGY ENCOUNTERS

Who is the Old Man and what is the "treasure" that he has hidden at Ernie Miller Park? How can the "Keepers of the Circle" help us find the treasure? Aided by a map and compass, your students will search for clues the Old Man has left to mark the trail to the "treasure." Assisted by the mysterious "Keepers of the Circle," your students will discover the secrets of decomposers, producers and consumers - three components of the ecosystem.

Grades: 3rd - 6th
Location: Ernie Miller Park
Fee: \$6.25 / \$6.75 per student
Minimum: 50 or \$312 / \$337
Time: 9:00 am - 1:30 pm

[April and May]



National Association of Interpretation Region VII Outstanding Interpretive Program

2003 Kansas Recreation & Park Association Natural Resource Award

"Students had feelings of accomplishment and involvement. Thank you for a very pleasant and educational program."

5th Grade Teacher,
Christ the King School

"The children come out learning more information than they realize."

6th Grade Teacher,
St. Joseph Elementary

ARCHEOLOGY LAB

This archeology program is designed to introduce students to the methods of archeology, as well as provide the opportunity for students to participate in a simulated archeological dig. The students will measure, catalog and interpret the artifacts they discover during their excavations. The Archeology Dig will be followed in the afternoon by a Primitive Technologies Workshop, which will include hunting technologies, fire building, paint materials, games and entertainment. These hands-on activities will provide students insight into how archeologists reconstruct the culture of ancient societies and tell the "story" of prehistoric humans.

Location: Ernie Miller Park Nature Center

Fee: \$6.25 / \$6.75 per student

Maximum: 70 students

Minimum: 30 students or \$187 / \$202

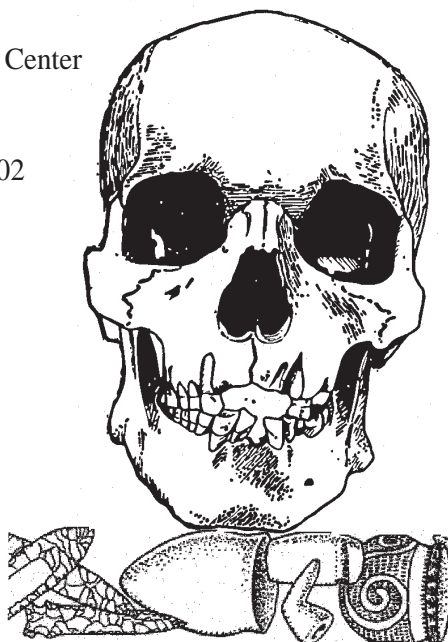
Time: 9:00 am - 2:00 pm

[January and February]

**1991 National Association of
Interpretation, Region VI,
Outstanding Interpretive Program**

"This is such a wonderful program. We look forward to it every year. It is a great supplement to our social studies curriculum."

**4th Grade Teacher,
Prairie School**



GRADE
4th - 6th



LAURA'S LEGACY

Author Laura Ingalls Wilder's stories of growing up in America's Heartland have entertained and fascinated audiences for years. Invite Laura to your classroom and hear the lessons she learned living on the prairie. Stories of survival in a harsh environment and pioneer tall tales will spark your students' imagination and curiosity.

Location: Your School

Fee: \$51 / \$56 first program

\$37 / \$41 consecutive programs

Maximum: 35 students

Time: 45 minute program

[January and February]
